

Airline Codes

| | | | |
|-----------|-------------------------|-----------|------------------------|
| 5J | CEBU Pacific Air | MH | Malaysia Airlines |
| 6E | IndiGo Airlines | MI | SilkAir |
| 9W | Jet Airways | MU | China Eastern Airlines |
| AI | Air India | NH | All Nippon Airways |
| AK | AirAsia | NZ | Air New Zealand |
| BI | Royal Brunei Airlines | OZ | Asiana Airlines |
| BR | EVA Air | PG | Bangkok Airways |
| CA | Air China | PR | Philippine Airlines |
| CI | China Airlines | QF | Qantas Airways |
| CX | Cathay Pacific | SG | Spicejet |
| CZ | China Southern Airlines | SQ | Singapore Airlines |
| GA | Garuda | TG | Thai Airways Int'l |
| JL | Japan Airlines | TR | Tigerair |
| JQ | Jetstar Airways | VA | Virgin Australia |
| KE | Korean Airlines | VN | Vietnam Airlines |

Percentage
(Aug 13 vs Aug 14)

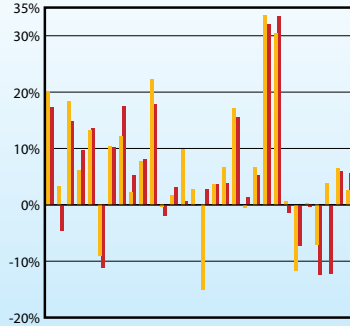
Percentage Points Change
(Aug 13 vs Aug 14)

Percentage
(Jan-Aug 13 vs Jan-Aug 14)

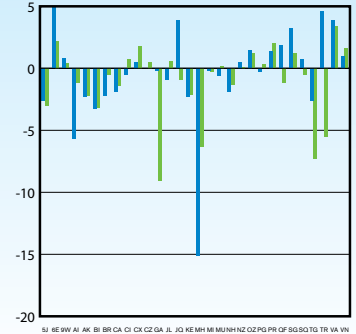
Percentage Points Change
(Jan-Aug 13 vs Jan-Aug 14)

Note: CX includes KA, VA includes TT

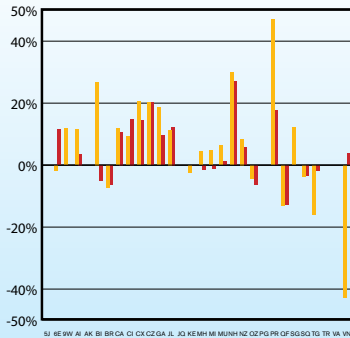
RPK Growth by Carrier



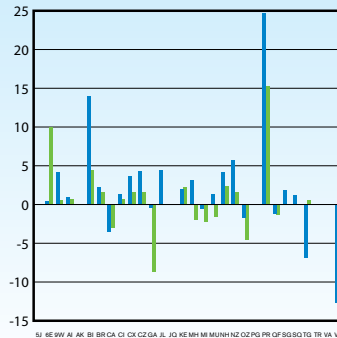
Passenger Load Factor Growth by Carrier



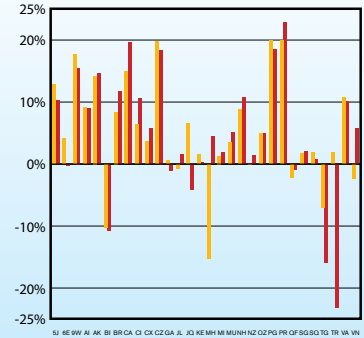
FTK Growth by Carrier



Freight Load Factor Growth by Carrier

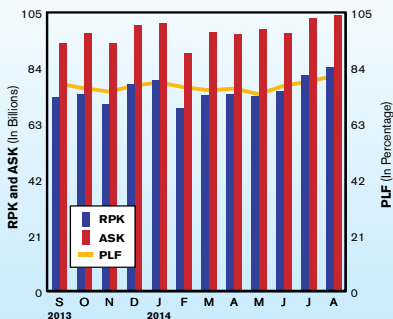


PAX Growth by Carrier



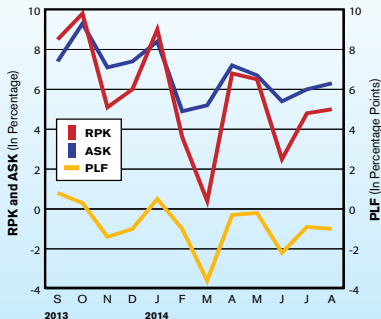
RPK, ASK and PLF

(Sep 13 to Aug 14)



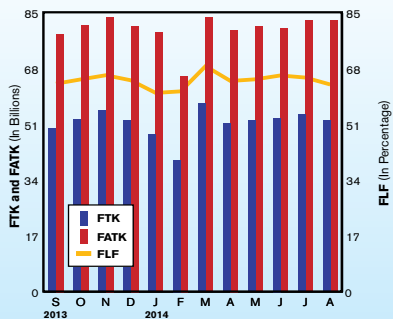
RPK, ASK and PLF Growth Rates

(Sep 13 to Aug 14)



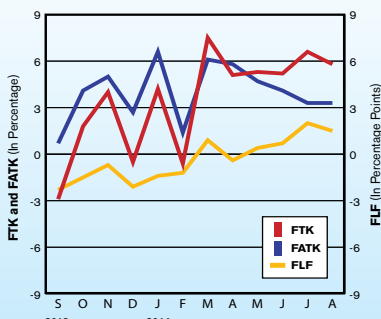
FTK, FATK and Freight Load Factor

(Sep 13 to Aug 14)



FTK, FATK and FLF Growth Rates

(Sep 13 to Aug 14)



TRAFFIC UPDATE – PRELIMINARY

INTERNATIONAL SCHEDULED SERVICES OF ASIA-PACIFIC AIRLINES

| International | 14-Sep | 13-Sep | % Change | Jan-Sep 2014 | Jan-Sep 2013 | % Change |
|------------------------------|--------|--------|----------|--------------|--------------|----------|
| Passengers (000) | 20,836 | 20,141 | 3.50% | 190,566 | 182,235 | 4.60% |
| RPK (mn.) | 76,178 | 73,504 | 3.60% | 691,148 | 660,425 | 4.70% |
| ASK (mn.) | 99,821 | 94,091 | 6.10% | 893,633 | 841,102 | 6.20% |
| Passenger Load Factor | 76.30% | 78.10% | - 1.8 pp | 77.30% | 78.50% | - 1.2 pp |
| FTK (mn.) | 5,257 | 4,994 | 5.30% | 46,156 | 43,930 | 5.10% |
| FATK (mn.) | 8,205 | 7,886 | 4.00% | 71,876 | 68,842 | 4.40% |
| Freight Load Factor | 64.10% | 63.30% | + 0.8 pp | 64.20% | 63.80% | + 0.4 pp |

- Aggregated traffic data for 30 Asia Pacific based carriers*
- Previous year data adjusted for comparison purposes
- RPK = revenue passenger kilometres
- ASK = available seat kilometres

- FTK = freight tonne kilometres
- FATK = available freight tonne kilometres
- All figures, including estimates for missing data, are provisional

* Effective January 2014, the enlarged dataset comprises aggregated traffic data for the following 30 Asia Pacific based airlines: 5J, 6E, 9W, AI, AK, BI, BR, CA, CI, CX, CZ, GA, JL, JQ, KA, KE, MH, MU, NH, NZ, OZ, PG, PR, SG, SO, TG, TR, QF, VA and VN.
Prior year comparisons have been adjusted accordingly.

AAPA MONTHLY INTERNATIONAL STATISTICS

Summary of Consolidated Results (thousands)

| 2013/14 | PAX | RPK | ASK | PLF | FTK | FATK | FLF | RTK | ATK | OLF |
|---------------|----------------|--------------------|----------------------|---------------|-------------------|-------------------|---------------|--------------------|--------------------|---------------|
| Sep-13 | 19,999 | 73,064,674 | 93,419,463 | 78.21% | 4,990,490 | 7,863,267 | 63.47% | 11,674,263 | 16,484,344 | 70.82% |
| Oct-13 | 20,418 | 74,380,874 | 97,193,676 | 76.53% | 5,256,066 | 8,111,948 | 64.79% | 12,082,120 | 17,082,618 | 70.73% |
| Nov-13 | 19,858 | 70,495,293 | 93,591,729 | 75.32% | 5,533,581 | 8,378,140 | 66.05% | 12,006,890 | 17,008,658 | 70.59% |
| Dec-13 | 21,440 | 77,884,484 | 100,372,817 | 77.60% | 5,227,088 | 8,102,791 | 64.51% | 12,340,185 | 17,458,281 | 70.68% |
| Jan-14 | 21,292 | 79,553,878 | 101,028,126 | 78.74% | 4,796,140 | 7,905,468 | 60.67% | 12,075,937 | 17,355,539 | 69.58% |
| Feb-14 | 19,412 | 68,987,226 | 89,687,007 | 76.92% | 4,023,936 | 6,581,578 | 61.14% | 10,343,068 | 14,982,156 | 69.04% |
| Mar-14 | 20,851 | 74,039,557 | 97,625,104 | 75.84% | 5,750,296 | 8,356,942 | 68.81% | 12,556,557 | 17,463,323 | 71.90% |
| Apr-14 | 20,880 | 74,131,754 | 96,976,716 | 76.44% | 5,130,460 | 7,979,488 | 64.30% | 11,909,622 | 17,022,222 | 69.97% |
| May-14 | 20,318 | 73,361,591 | 98,702,961 | 74.33% | 5,237,823 | 8,081,681 | 64.81% | 12,017,951 | 17,283,995 | 69.53% |
| Jun-14 | 20,523 | 75,491,573 | 97,369,102 | 77.53% | 5,302,065 | 8,035,833 | 65.98% | 12,220,750 | 17,108,132 | 71.43% |
| Jul-14 | 22,182 | 81,497,516 | 103,042,867 | 79.09% | 5,403,207 | 8,269,814 | 65.34% | 12,796,565 | 17,841,341 | 71.72% |
| Aug-14 | 23,209 | 84,538,506 | 104,073,613 | 81.23% | 5,232,354 | 8,275,457 | 63.23% | 12,913,057 | 17,989,118 | 71.78% |
| TOTAL | 250,381 | 907,426,927 | 1,173,083,181 | 77.35% | 61,883,506 | 95,942,406 | 64.50% | 144,936,966 | 205,079,728 | 70.67% |

| 2013/14 | PAX | RPK | ASK | PLF | FTK | FATK | FLF | RTK | ATK | OLF |
|---------------|-------------|-------------|-------------|-------------|-------------|-------------|-------------|-------------|-------------|-------------|
| Sep-13 | 10.7% | 8.5% | 7.4% | 0.8 | -2.9% | 0.7% | -2.3 | 3.3% | 3.7% | -0.3 |
| Oct-13 | 9.8% | 9.8% | 9.3% | 0.3 | 1.8% | 4.1% | -1.5 | 6.0% | 6.4% | -0.3 |
| Nov-13 | 6.7% | 5.1% | 7.1% | -1.4 | 4.0% | 5.0% | -0.7 | 4.4% | 5.8% | -0.9 |
| Dec-13 | 6.3% | 6.0% | 7.4% | -1.0 | -0.5% | 2.7% | -2.1 | 2.9% | 5.5% | -1.8 |
| Jan-14 | 9.4% | 9.0% | 8.4% | 0.5 | 4.2% | 6.6% | -1.4 | 6.8% | 7.9% | -0.8 |
| Feb-14 | 3.2% | 3.6% | 4.9% | -1.0 | -0.6% | 1.4% | -1.2 | 1.8% | 4.0% | -1.5 |
| Mar-14 | 1.0% | 0.4% | 5.2% | -3.6 | 7.5% | 6.1% | 0.9 | 3.6% | 6.1% | -1.8 |
| Apr-14 | 6.8% | 6.8% | 7.2% | -0.3 | 5.1% | 5.8% | -0.4 | 5.6% | 7.4% | -1.2 |
| May-14 | 6.8% | 6.5% | 6.7% | -0.2 | 5.3% | 4.7% | 0.4 | 6.0% | 6.4% | -0.3 |
| Jun-14 | 1.6% | 2.5% | 5.4% | -2.2 | 5.2% | 4.1% | 0.7 | 3.6% | 5.4% | -1.3 |
| Jul-14 | 4.7% | 4.8% | 6.0% | -0.9 | 6.6% | 3.3% | 2.0 | 5.0% | 5.1% | -0.1 |
| Aug-14 | 4.5% | 5.0% | 6.3% | -1.0 | 5.8% | 3.3% | 1.5 | 5.0% | 5.6% | -0.4 |
| GROWTH | 5.9% | 5.6% | 6.8% | -0.9 | 3.5% | 4.0% | -0.3 | 4.5% | 5.8% | -0.9 |

Percentage or Percentage Point Change

| CY | PAX | RPK | ASK | PLF | FTK | FATK | FLF | RTK | ATK | OLF |
|-------------|----------------|--------------------|----------------------|---------------|-------------------|-------------------|---------------|--------------------|--------------------|---------------|
| 2009 | 176,548 | 678,862,490 | 913,265,605 | 74.33% | 53,025,040 | 82,881,494 | 63.98% | 116,760,215 | 168,508,544 | 69.29% |
| 2010 | 199,719 | 748,329,072 | 956,502,440 | 78.24% | 65,797,161 | 95,557,237 | 68.86% | 135,496,828 | 184,786,039 | 73.33% |
| 2011 | 208,573 | 779,722,979 | 1,020,828,321 | 76.38% | 62,791,788 | 95,826,950 | 65.53% | 134,687,947 | 190,626,840 | 70.66% |
| 2012 | 225,253 | 826,623,131 | 1,060,237,125 | 77.97% | 60,635,399 | 92,545,454 | 65.52% | 136,598,247 | 191,260,306 | 71.42% |
| 2013 | 242,780 | 879,456,526 | 1,126,429,294 | 78.07% | 59,914,960 | 93,238,420 | 64.26% | 140,594,346 | 197,300,548 | 71.26% |

| CY | PAX | RPK | ASK | PLF | FTK | FATK | FLF | RTK | ATK | OLF |
|-------------|-------------|-------------|-------------|------------|--------------|-------------|-------------|-------------|-------------|-------------|
| 2010 | 13.1% | 10.2% | 4.7% | 3.9 | 24.1% | 15.3% | 4.9 | 16.0% | 9.7% | 4.0 |
| 2011 | 4.4% | 4.2% | 6.7% | -1.9 | -4.6% | 0.3% | -3.3 | -0.6% | 3.2% | -2.7 |
| 2012 | 8.0% | 6.0% | 3.9% | 1.6 | -3.4% | -3.4% | 0.0 | 1.4% | 0.3% | 0.8 |
| 2013 | 7.8% | 6.4% | 6.2% | 0.1 | -1.2% | 0.7% | -1.3 | 2.9% | 3.2% | -0.2 |

Percentage or Percentage Point Change

Note:

•2009-2010 data consolidated from 29 carriers based in the region: 5J, 6E, 9W, AI, AK, BI, BR, CA, CI, CX, CZ, GA, JL, JQ, KA, KE, MH, MU, NH, NZ, OZ, PR, QF, SG, SQ, TG, TR, VA and VN
 •Data from 2011 consolidated from 30 carriers based in the region: 5J, 6E, 9W, AI, AK, BI, BR, CA, CI, CX, CZ, GA, JL, JQ, KA, KE, MH, MU, NH, NZ, OZ, PG, PR, SG, SQ, TG, TR, QF, VA and VN