

## Airline Codes

<b>5J</b>	CEBU Pacific Air	<b>MH</b>	Malaysia Airlines
<b>6E</b>	IndiGo Airlines	<b>MI</b>	SilkAir
<b>9W</b>	Jet Airways	<b>MU</b>	China Eastern Airlines
<b>AI</b>	Air India	<b>NH</b>	All Nippon Airways
<b>AK</b>	AirAsia	<b>NZ</b>	Air New Zealand
<b>BI</b>	Royal Brunei Airlines	<b>OZ</b>	Asiana Airlines
<b>BR</b>	EVA Air	<b>PG</b>	Bangkok Airways
<b>CA</b>	Air China	<b>PR</b>	Philippine Airlines
<b>CI</b>	China Airlines	<b>QF</b>	Qantas Airways
<b>CX</b>	Cathay Pacific	<b>SG</b>	Spicejet
<b>CZ</b>	China Southern Airlines	<b>SQ</b>	Singapore Airlines
<b>GA</b>	Garuda	<b>TG</b>	Thai Airways Int'l
<b>JL</b>	Japan Airlines	<b>TR</b>	Tigerair
<b>JQ</b>	Jetstar Airways	<b>VA</b>	Virgin Australia
<b>KC</b>	Air Astana	<b>VN</b>	Vietnam Airlines
<b>KE</b>	Korean Airlines		

**Percentage**  
(Jun 14 vs Jun 15)

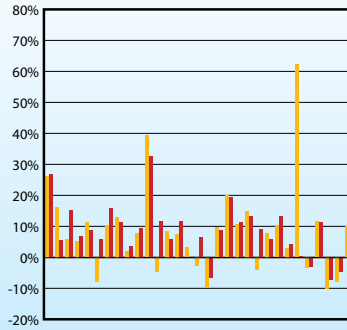
**Percentage Points Change**  
(Jun 14 vs Jun 15)

**Percentage**  
(Jan-Jun 14 vs Jan-Jun 15)

**Percentage Points Change**  
(Jan-Jun 14 vs Jan-Jun 15)

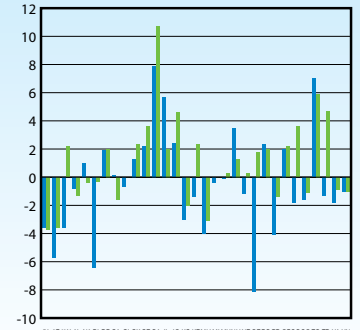
Note: CX includes KA, VA includes TT

## RPK Growth by Carrier



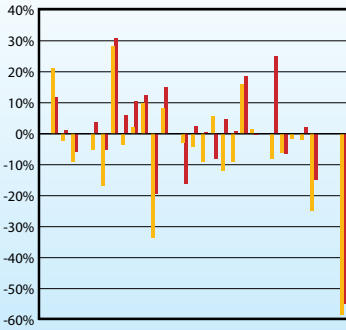
SJ KE W AI AK BI BR CA CI CX CZ GA JL JQ KC KE MH MI MUN HN Z OZ PG PR QF SG SGTG TR VA VN

## Passenger Load Factor Growth by Carrier



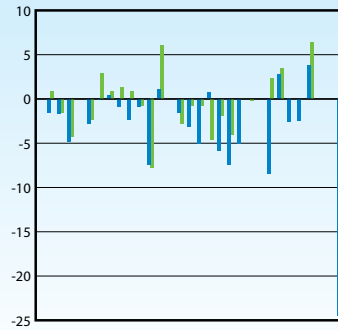
SJ KE W AI AK BI BR CA CI CX CZ GA JL JQ KC KE MH MI MUN HN Z OZ PG PR QF SG SGTG TR VA VN

## FTK Growth by Carrier



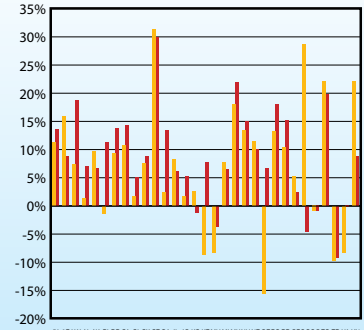
SJ KE W AI AK BI BR CA CI CX CZ GA JL JQ KC KE MH MI MUN HN Z OZ PG PR QF SG SGTG TR VA VN

## Freight Load Factor Growth by Carrier



SJ KE W AI AK BI BR CA CI CX CZ GA JL JQ KC KE MH MI MUN HN Z OZ PG PR QF SG SGTG TR VA VN

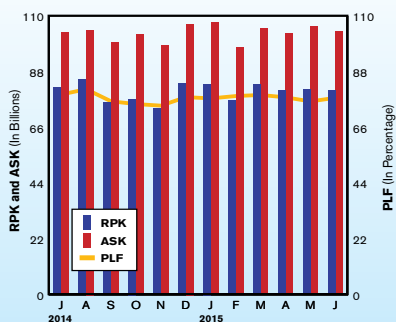
## PAX Growth by Carrier



SJ KE W AI AK BI BR CA CI CX CZ GA JL JQ KC KE MH MI MUN HN Z OZ PG PR QF SG SGTG TR VA VN

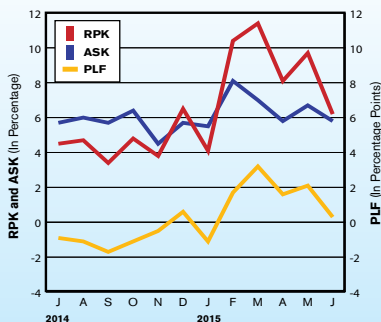
## RPK, ASK and PLF

(Jul 14 to Jun 15)



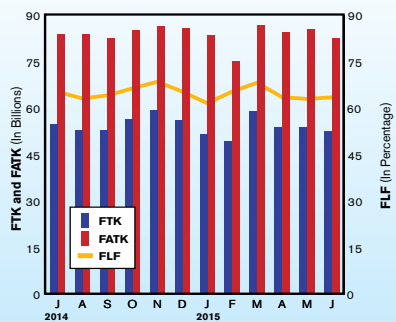
## RPK, ASK and PLF Growth Rates

(Jul 14 to Jun 15)



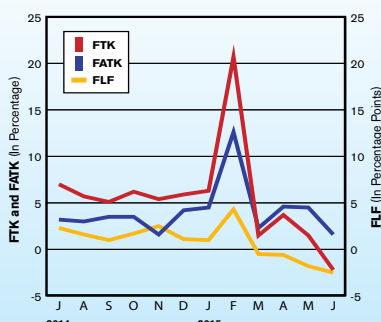
## FTK, FATK and Freight Load Factor

(Jul 14 to Jun 15)



## FTK, FATK and FLF Growth Rates

(Jul 14 to Jun 15)



## TRAFFIC UPDATE - PRELIMINARY

### INTERNATIONAL SCHEDULED SERVICES OF ASIA-PACIFIC AIRLINES

International	Jul-15	Jul-14	% Change	Jan-Jul 2015	Jan-Jul 2014	% Change
<b>Passengers (000)</b>	23,655	22,204	+ 6.5%	159,342	146,243	+ 9.0%
<b>RPK (mn.)</b>	88,918	81,857	+ 8.6%	573,799	529,778	+ 8.3%
<b>ASK (mn.)</b>	109,894	103,508	+ 6.2%	733,041	688,809	+ 6.4%
<b>Passenger Load Factor</b>	80.9%	79.1%	+ 1.8 pp	78.3%	76.9%	+ 1.4 pp
<b>FTK (mn.)</b>	5,358	5,481	- 2.2%	37,387	36,116	+ 3.5%
<b>FATK (mn.)</b>	8,632	8,391	+ 2.9%	58,503	55,988	+ 4.5%
<b>Freight Load Factor</b>	62.1%	65.3%	- 3.2 pp	63.9%	64.5%	- 0.6 pp

- Effective September 2014, the dataset comprises aggregated traffic data from the following 31 Asia Pacific based carriers: 5J, 6E, 9W, AI, AK, BI, BR, CA, CI, CX, CZ, GA, JL, JQ, KA, KC, KE, MH, MU, NH, NZ, OZ, PG, PR, SG, SQ, TG, TR, QF, VA and VN.
- Previous year data adjusted for comparison purposes

- RPK = revenue passenger kilometres
- ASK = available seat kilometres
- FTK = freight tonne kilometres
- FATK = available freight tonne kilometres
- All figures, including estimates for missing data, are provisional

# AAPA MONTHLY INTERNATIONAL STATISTICS

Summary of Consolidated Results (thousands)

2014/15	PAX	RPK	ASK	PLF	FTK	FATK	FLF	RTK	ATK	OLF
Jul-14	22,189	81,841,423	103,514,082	79.06%	5,414,374	8,285,068	65.35%	12,830,914	17,911,136	71.64%
Aug-14	23,241	84,933,960	104,550,798	81.24%	5,234,917	8,301,591	63.06%	12,951,664	18,060,581	71.71%
Sep-14	20,756	76,024,965	99,491,045	76.41%	5,243,405	8,167,940	64.19%	12,172,691	17,437,497	69.81%
Oct-14	21,768	77,366,418	102,635,085	75.38%	5,589,267	8,413,418	66.43%	12,638,874	17,970,983	70.33%
Nov-14	21,070	73,576,461	98,434,492	74.75%	5,851,728	8,554,414	68.41%	12,573,046	17,740,472	70.87%
Dec-14	23,251	83,402,510	106,826,815	78.07%	5,543,138	8,485,218	65.33%	13,131,435	18,440,184	71.21%
Jan-15	22,472	83,216,557	107,336,609	77.53%	5,158,079	8,372,098	61.61%	12,853,345	18,513,522	69.43%
Feb-15	21,941	76,550,811	97,575,546	78.45%	4,926,158	7,531,807	65.40%	12,017,681	16,776,159	71.64%
Mar-15	23,326	82,940,938	105,149,185	78.88%	5,920,149	8,676,785	68.23%	13,624,733	18,653,355	73.04%
Apr-15	23,074	80,518,358	103,267,302	77.97%	5,382,083	8,468,786	63.55%	12,885,292	18,283,216	70.48%
May-15	22,960	80,934,794	106,014,479	76.34%	5,386,934	8,547,784	63.02%	12,929,785	18,621,617	69.43%
Jun-15	21,912	80,690,658	103,760,033	77.77%	5,255,547	8,273,728	63.52%	12,761,170	18,135,299	70.37%
<b>TOTAL</b>	<b>135,686</b>	<b>484,852,115</b>	<b>623,103,155</b>	<b>77.81%</b>	<b>32,028,950</b>	<b>49,870,988</b>	<b>64.22%</b>	<b>77,072,006</b>	<b>108,983,168</b>	<b>70.72%</b>

2014/15	PAX	RPK	ASK	PLF	FTK	FATK	FLF	RTK	ATK	OLF
Jul-14	4.0%	4.5%	5.7%	-0.9	6.8%	3.2%	2.2	4.9%	5.0%	-0.1
Aug-14	3.8%	4.8%	6.0%	-1.0	5.7%	3.3%	1.5	4.9%	5.4%	-0.4
Sep-14	3.1%	3.4%	5.7%	-1.7	5.0%	3.6%	0.9	3.9%	5.2%	-0.9
Oct-14	6.0%	4.9%	6.4%	-1.1	6.2%	3.7%	1.6	5.1%	5.6%	-0.4
Nov-14	5.4%	3.8%	4.4%	-0.5	5.7%	1.8%	2.5	4.4%	3.8%	0.4
Dec-14	7.8%	6.5%	5.7%	0.6	6.0%	4.4%	1.0	6.1%	5.1%	0.7
Jan-15	4.9%	4.1%	5.5%	-1.1	6.3%	4.5%	1.0	4.9%	5.2%	-0.2
Feb-15	12.4%	10.4%	8.1%	1.7	20.7%	12.6%	4.3	14.4%	10.5%	2.4
Mar-15	11.2%	11.4%	7.0%	3.2	1.5%	2.3%	-0.5	6.9%	5.1%	1.2
Apr-15	9.9%	8.1%	5.8%	1.6	3.7%	4.6%	-0.6	6.5%	5.7%	0.5
May-15	12.3%	9.7%	6.7%	2.1	1.5%	4.5%	-1.8	6.0%	6.1%	-0.1
Jun-15	6.0%	6.2%	5.8%	0.3	-2.2%	1.6%	-2.5	2.7%	4.2%	-1.0
<b>GROWTH</b>	<b>9.4%</b>	<b>8.3%</b>	<b>6.5%</b>	<b>1.3</b>	<b>4.5%</b>	<b>4.8%</b>	<b>-0.1</b>	<b>6.7%</b>	<b>6.0%</b>	<b>0.4</b>

Percentage or Percentage Point Change

CY	PAX	RPK	ASK	PLF	FTK	FATK	FLF	RTK	ATK	OLF
2010	199,719	748,329,072	956,502,440	78.24%	66,482,762	96,655,315	68.78%	136,551,799	185,849,125	73.47%
2011	208,573	779,722,979	1,020,828,321	76.38%	63,517,713	97,147,456	65.38%	136,163,032	192,457,984	70.75%
2012	225,253	826,623,131	1,060,237,125	77.97%	61,382,916	93,907,867	65.37%	138,259,921	193,295,535	71.53%
2013	244,319	883,331,064	1,132,920,864	77.97%	60,691,434	94,713,942	64.08%	142,715,350	200,316,966	71.24%
2014	<b>256,205</b>	<b>924,734,739</b>	<b>1,200,671,867</b>	<b>77.02%</b>	<b>63,916,598</b>	<b>98,401,303</b>	<b>64.96%</b>	<b>149,641,463</b>	<b>211,588,672</b>	<b>70.72%</b>

CY	PAX	RPK	ASK	PLF	FTK	FATK	FLF	RTK	ATK	OLF
2011	4.4%	4.2%	6.7%	-1.9	-4.5%	0.5%	-3.4	-0.3%	3.6%	-2.7
2012	8.0%	6.0%	3.9%	1.6	-3.4%	-3.3%	0.0	1.5%	0.4%	0.8
2013	8.5%	6.9%	6.9%	0.0	-1.1%	0.9%	-1.3	3.2%	3.6%	-0.3
2014	<b>4.9%</b>	<b>4.7%</b>	<b>6.0%</b>	<b>-1.0</b>	<b>5.3%</b>	<b>3.9%</b>	<b>0.9</b>	<b>4.9%</b>	<b>5.6%</b>	<b>-0.5</b>

Percentage or Percentage Point Change

**Note:**

- 2010 data consolidated from 29 carriers based in the region: 5J, 6E, 9W, AI, AK, BI, BR, CA, CI, CX, CZ, GA, JL, JQ, KA, KE, MH, MU, NH, NZ, OZ, PR, QF, SG, SQ, TG, TR, VA and VN
- 2011-2012 data consolidated from 30 carriers based in the region: 5J, 6E, 9W, AI, AK, BI, BR, CA, CI, CX, CZ, GA, JL, JQ, KA, KE, MH, MU, NH, NZ, OZ, PG, PR, SG, SQ, TG, TR, QF, VA and VN
- Data from 2013 consolidated from 31 carriers based in the region: 5J, 6E, 9W, AI, AK, BI, BR, CA, CI, CX, CZ, GA, JL, JQ, KA, KC, KE, MH, MU, NH, NZ, OZ, PG, PR, SG, SQ, TG, TR, QF, VA and VN